

Agroforestry for Flood Resilient Livelihood

What is agroforestry?

Agroforestry is a farming system where trees are grown together with crops and/or livestock on the same land. It helps farmers earn while protecting land from floods and other climate induced disasters.

Why agroforestry?



- To restore and protect land
- To reduce the risk of floods and riverbank erosion
- To adapt to the impacts of climate change
- To improve farmers' income and livelihoods
- To promote sustainable agriculture as a nature-based solution (NbS) and ecosystem-based adaptation (EbA)

Where does agroforestry work best?

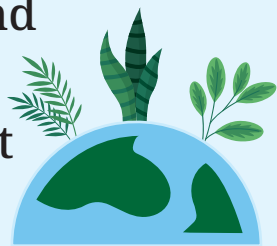


- In areas frequently affected by floods
- In riverbanks and flood plain areas
- In places where arable land has been lost due to sand deposition
- In rural areas with degraded and eroded land

Benefits of agroforestry

Economic

- Income from crops, fruits, timber, fodder, fuelwood
- Better use of degraded and flood-affected land
- Creates local employment opportunities



Environmental

- Stabilizes riverbanks and floodplains
- Reduces soil erosion and landslides
- Improves biodiversity, soil fertility and water retention



Social

- Supports engagement of women, Dalits, people with disability and land-poor households
- Improves food and nutrition security
- Strengthen climate-resilient livelihoods



Common agroforestry systems

- **Agri-Silviculture system:** Crops + timber trees
- **Agri-Horticulture system:** Crops + fruit trees
- **Silvopasture system:** Trees + fodder + livestock
- **Silvofishery system:** Fish + trees
- **Home garden:** Homestead gardens (fruits and fodder tree, crops, vegetables, medicinal plants etc.)



Selecting suitable species

- **Flood-resilient trees:** Khair, Bamboo, Sissoo, Jamun
- **Fruits:** Mango, Litchi, Banana, Guava, Papaya, Jackfruit
- **Fodder & grasses:** Napier, Stylo, Agasti, Kansh, Ipil Ipil
- **Crops:** Rice, Wheat, Maize, Sugarcane, Lentil, Legumes, and Vegetables



Basic planting and management techniques

- Plant according to the seasonal calendar
- Maintain proper spacing and pruning
- Protect from grazing, fire, and pests
- Use organic manure and bio pesticides
- Combine short-term crops with long-term trees



How can we ensure inclusivity in agroforestry?

- Active participation of at least 50% women
- Participation of youth, indigenous, ethnic, Dalit, landless, people with disability and marginalized communities
- Equal access to training and other social and economic opportunities
- Fair and equal access in benefits sharing



Supported by:
Federal Ministry for the Environment, Nature Conservation, Nuclear Safety and Consumer Protection



based on a decision of the German Bundestag